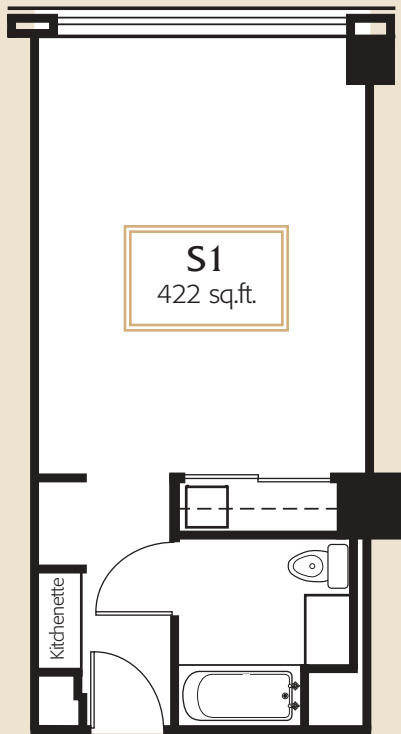




Floor Plans

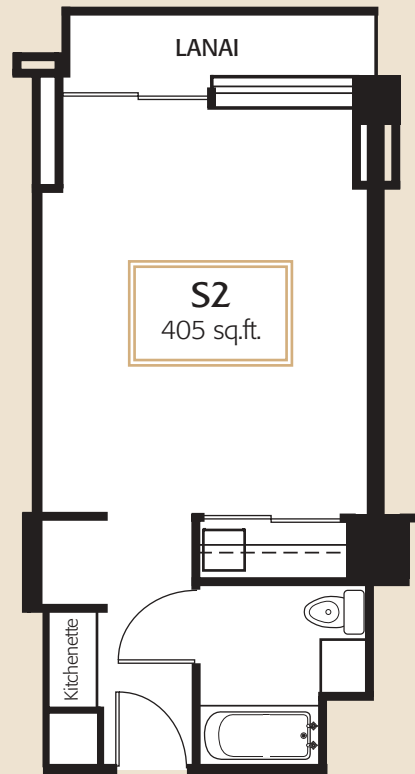


Park Shore offers a wide variety of floor plans. All apartments have views of Lake Washington. North views include Madison Park, the University District and Husky Stadium, Laurelhurst, the Evergreen Point Floating Bridge, Mt. Baker, and across the lake to the east side. South views include Washington Park, out past The Seattle Tennis Club toward Leschi, and across the lake to Medina. Washington Park Tower is next-door. Some south view apartments include Mount Rainier, as do all east-end solariums. Corner apartments include even more expansive views to the east and west.



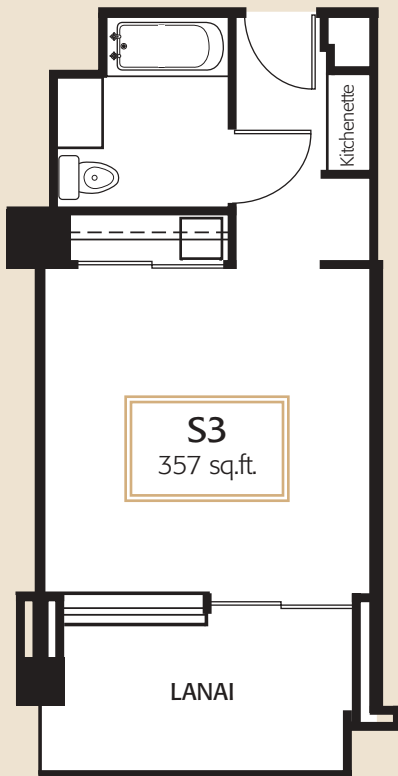
S1
422 sq.ft.

Studio
North View



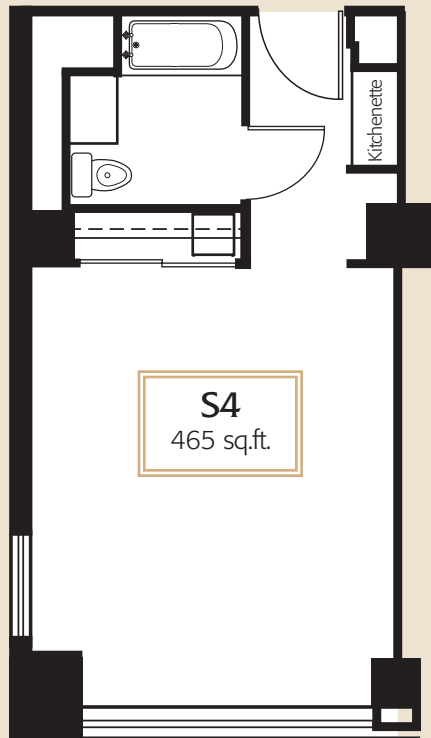
S2
405 sq.ft.

Studio with Lanai
North View



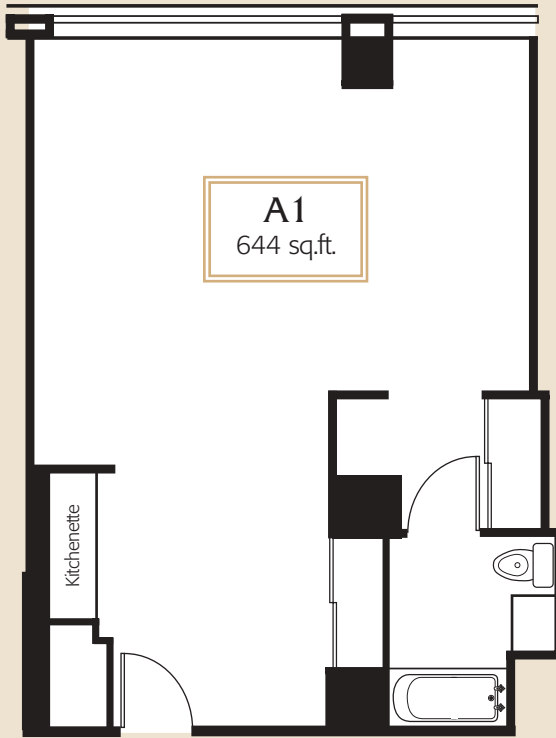
S3
357 sq.ft.

Studio with Lanai
South View



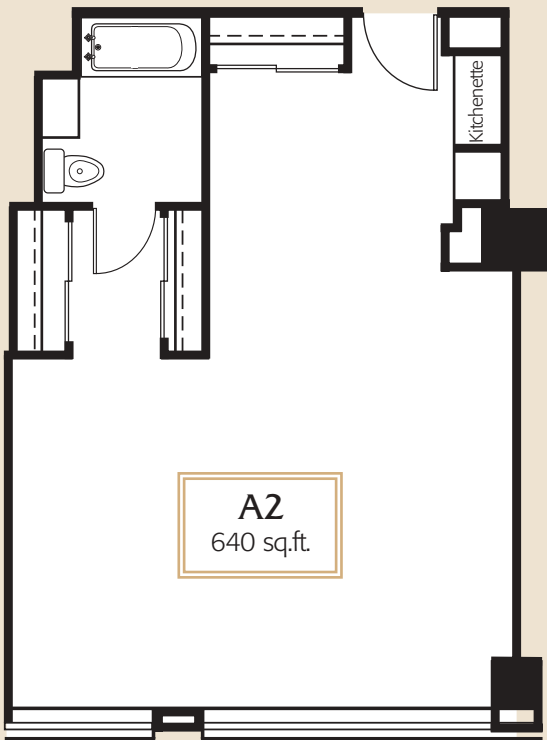
S4
465 sq.ft.

Studio
South & West Views



A1
644 sq.ft.

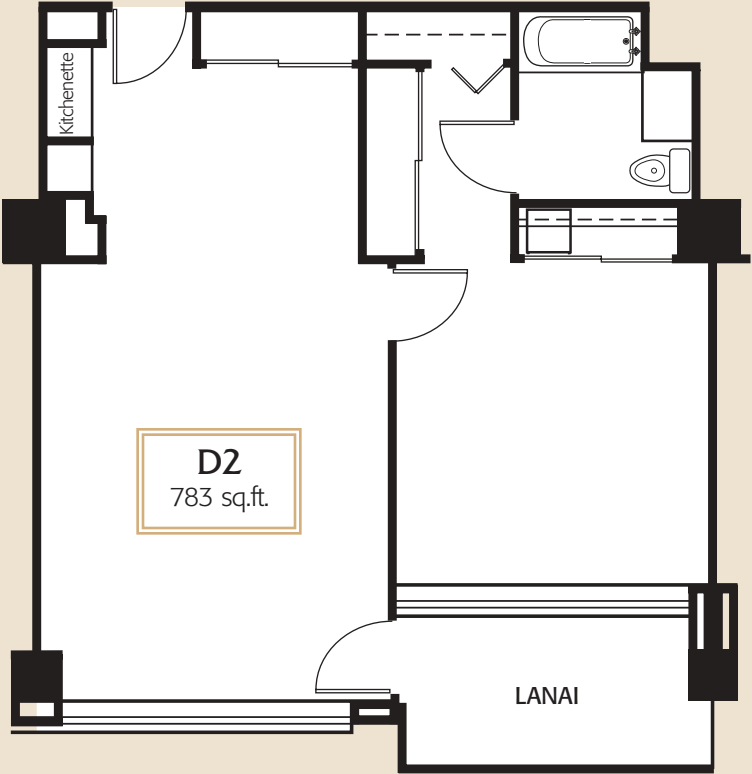
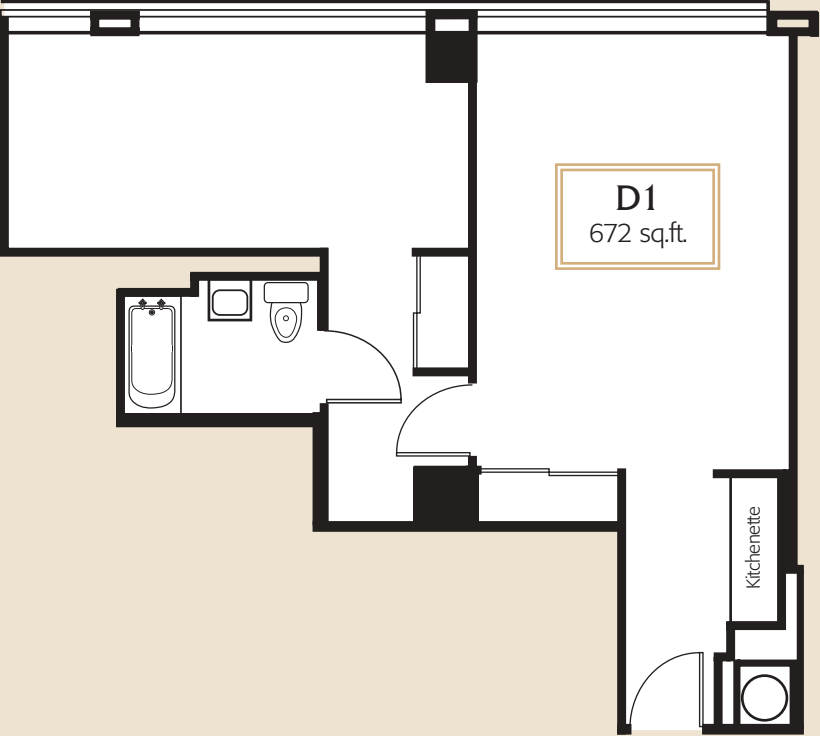
Alcove
North View



Alcove
South View

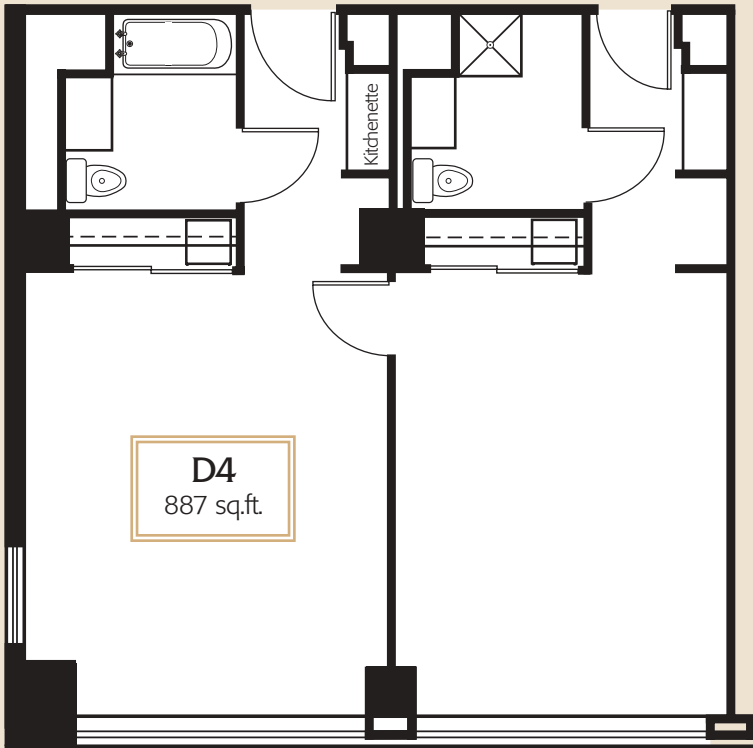
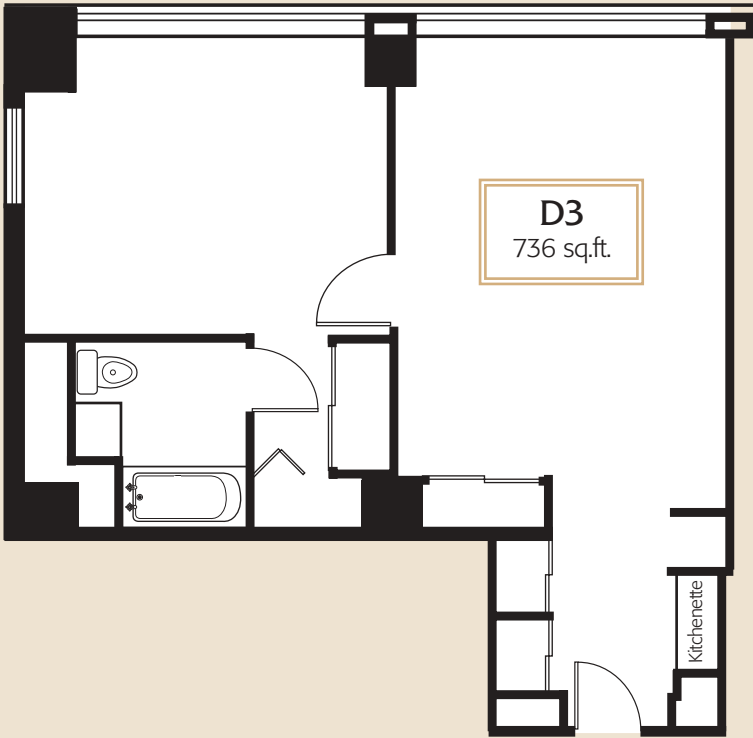
A2
640 sq.ft.

1 Bedroom
North View



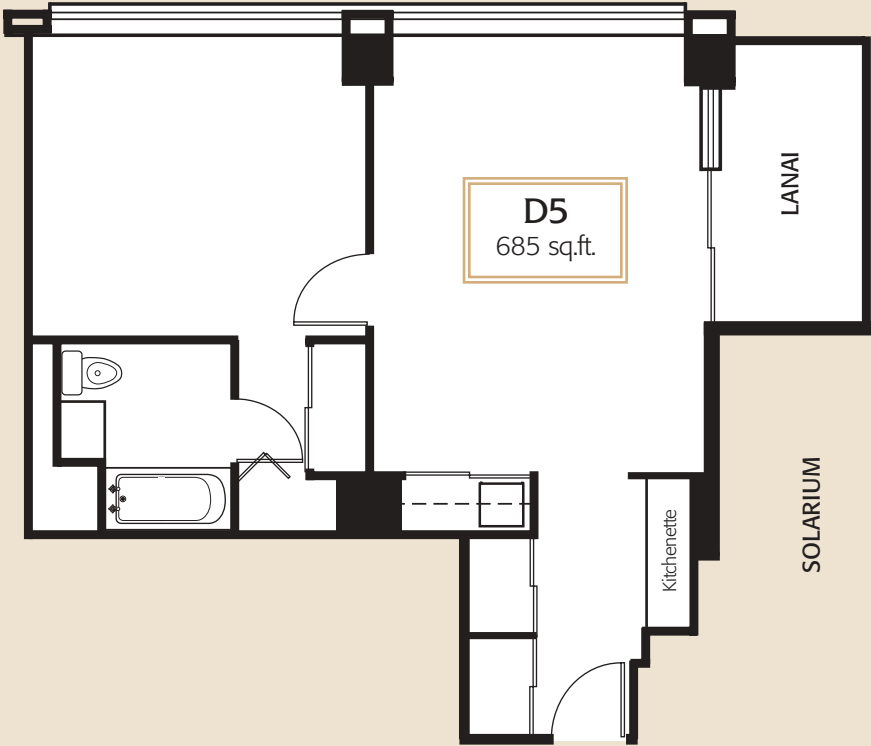
1 Bedroom with Lanai
South View

1 Bedroom
North & West Views



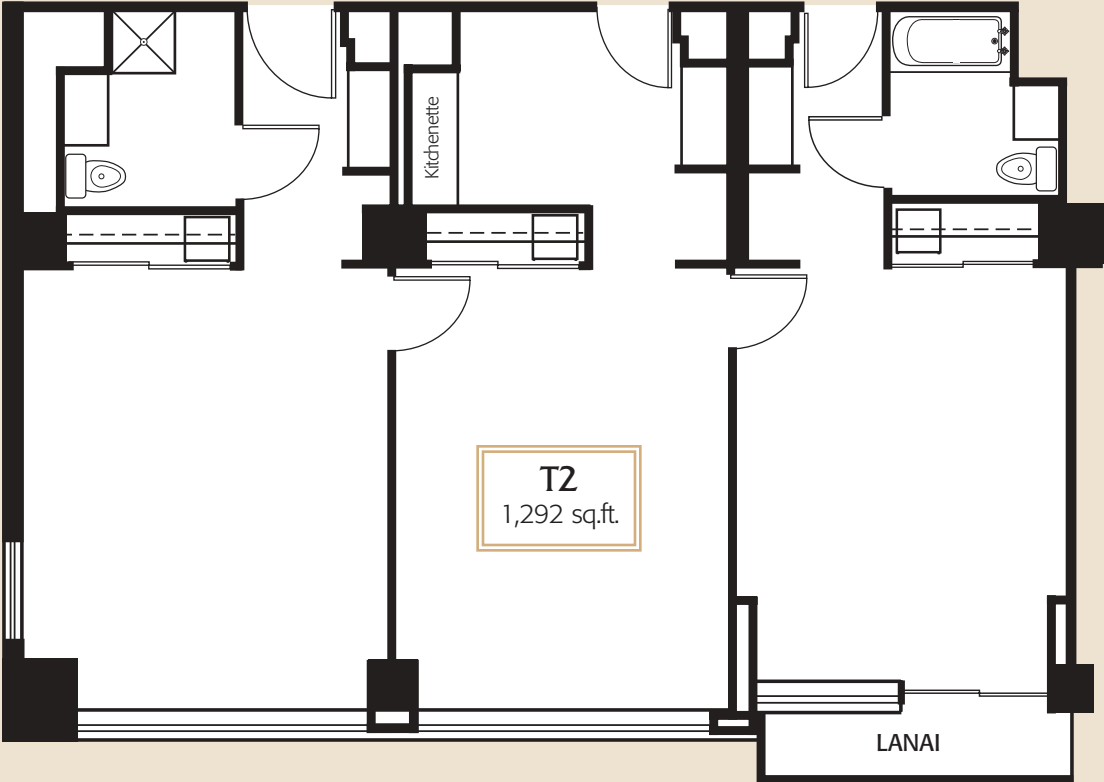
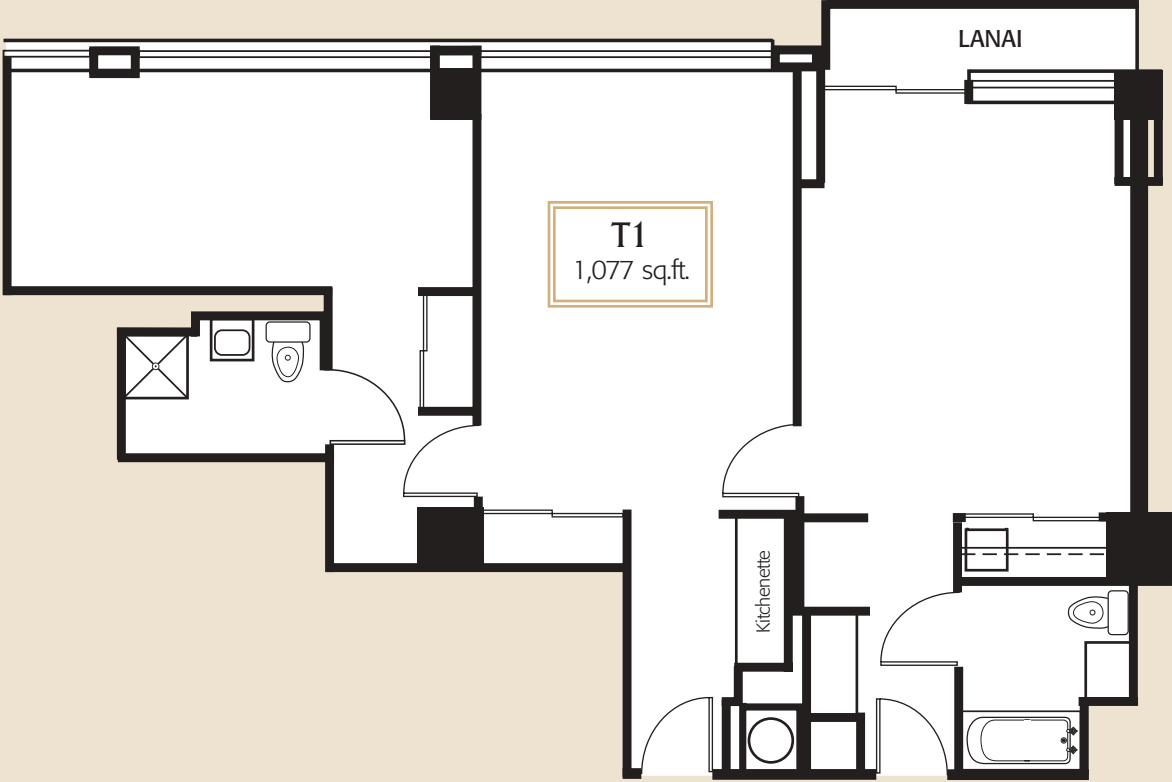
1 Bedroom with 2 Baths
South & West Views

1 Bedroom with Lanai
North & East Views



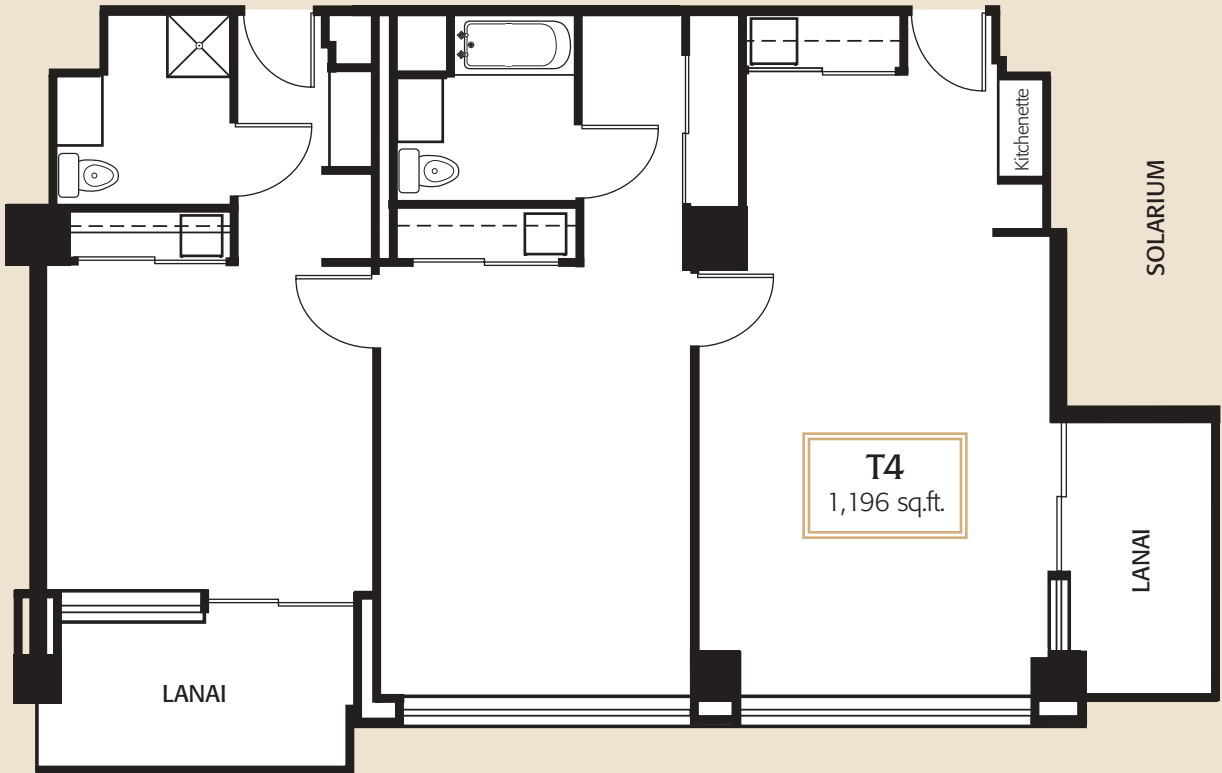
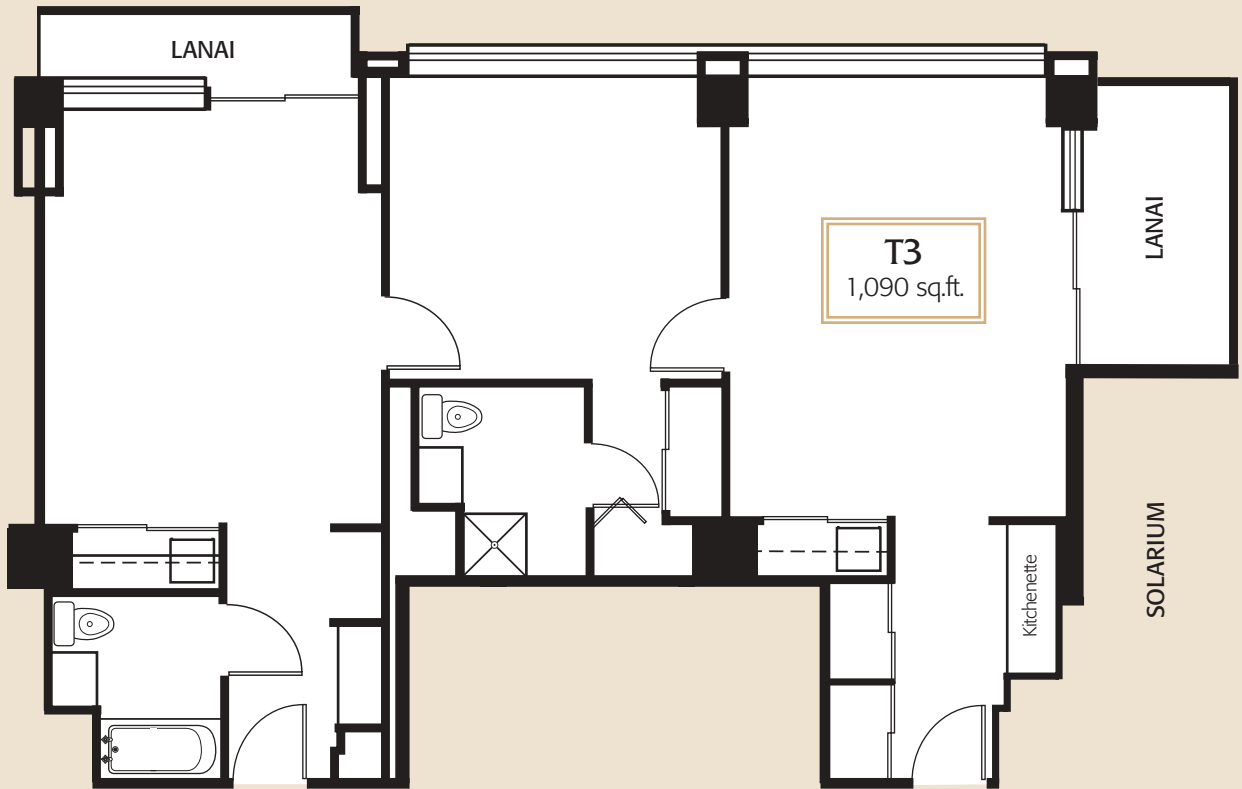
1 Bedroom with Lanai
South & East Views

2 Bedroom with Lanai
North View



2 Bedroom with Lanai
South & West Views

2 Bedroom with 2 Lanais
North & East Views



2 Bedroom with 2 Lanais
South & East Views